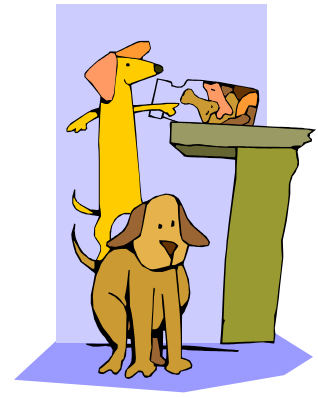


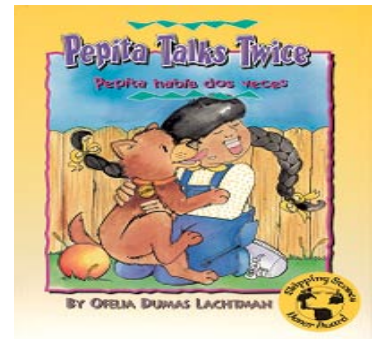
# Theme 6

## Smart Solutions



Title:

Pepita Talks Twice



Author:

Ofelia Dumas Lachtman



Michael Justice/Mercury Pictures

Illustrator:

Thomas B. Allen



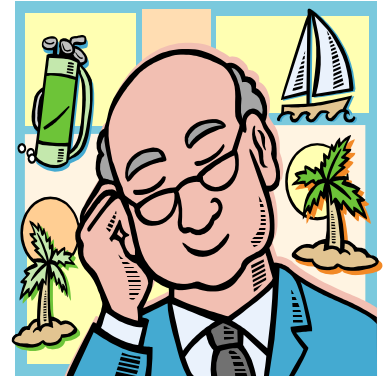
## Genre: Realistic Fiction:

realistic characters and events  
come to life in a fictional plot



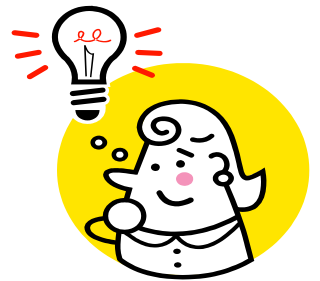
## Comprehension Strategy:

**Evaluate:** to decide if  
what we are reading is  
entertaining, informative, or  
useful for us.



## Comprehension Skill:

**Problem Solving and  
Decision Making**



# Comprehension Skill Review:

## Author's Viewpoint; Making Inferences

### Spelling Focus:

Words That End with -er or -le

Basic:

summer	winter	little
October	travel	color
apple	able	November
ever	later	purple

Review:

**flower**

**people**

Challenge:

**thermometer**

**mumble**

**Key Concept:**

**Speaking two languages**

**Key Vocabulary:**

**language-** spoken or written human speech

**Spanish-** a language

**enchilada**- tortilla rolled around a filling, then covered with spicy sauce



**salsa**- a spicy sauce usually made of tomatoes, onions, and peppers



**tortilla**- a round, flat, Mexican bread



**tamales**- fried chopped meat and crushed peppers rolled in cornmeal dough and steamed



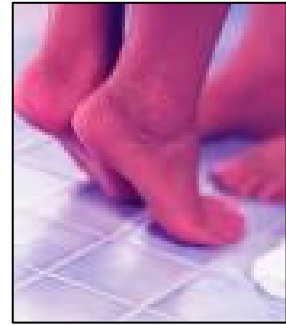
**taco**- tortillas folded around a filling such as ground meat or cheese



## Other Vocabulary:

**grumble**- a complaint; to complain

**tiptoed**- walked quietly



**ducked**- lowered one's head and body quickly to avoid being seen by others



**mumbled**- said softly and unclearly

**darted**- moved suddenly and very quickly

**nuzzled**- rubbed gently

**Vocabulary Skills:**

**Dictionary: Synonyms**

**Information & Study Skills:**

**Bilingual Dictionary**



**Word Work:**

**Grammar Skills: Adjectives**

Writing:

Writing an Announcement

Listening/Speaking/Viewing:

Resolve Conflict

Spiral Review:

Structural Analysis: Word  
Endings and Suffixes

Information & Study Skills:

Multimedia Resources; Using an  
Atlas, Charts, Tables, and  
Graph